

THE EVENT SERIES

FOLDING/STACKING FURNITURE

Suitable for any occasion.



PLASTIC FOLDING CHAIRS

Lightweight durability. Simple maintenance. And a range of contemporary style options to complement any décor.



2000FC
8/carton

- Deep radius back is vented for added comfort.
- Double-riveted rear cross-brace.
- Non-marring polyethylene foot caps.
- 225 lb weight rating.
- Finishes: Wedding White, Black, Neutral.



2200FC
8/carton

- Overlapping back protects frame from scratches.
- Double-riveted rear cross-brace.
- Non-marring polyethylene foot caps.
- 225 lb weight rating.
- Finishes: Wedding White, Black, Neutral.



5000FC
4/carton

- Contoured, durable blow-molded polyethylene seat and back.
- Arched cross-braces on legs ensure exceptional stability.
- 250 lb weight rating.
- Finish: Textured White with Gray hammer-coat frame.

CARTS FOR FOLDING CHAIRS



2200C

- Folding chair stack cart for 2200FC chairs.
- Total capacity is 60 chairs.
- Finish: Black powder coat.



5000C

- Folding chair stack cart for 5000FC chairs.
- Total capacity is 27 chairs.
- Finish: Black powder coat.

STEEL FOLDING CHAIRS

A tough performer, no matter how you dress it up. The powder-coat finish is pleasing to the eye and touch, non-marring leg caps won't scuff floors, and every model folds nearly flat for storage.



2710FC
4/carton

- Additional double-riveted rear cross-brace.
- 18-gauge tubular steel frame.
- 250 lb weight rating.
- Finishes: Gray, Tan.



2800FC
4/carton

- Additional double-riveted rear cross-brace.
- 18-gauge tubular steel frame.
- Padded vinyl covered seat.
- 250 lb weight rating.
- Finishes: Gray, Tan.



2900FC
4/carton

- Additional double-riveted rear cross-brace.
- 18-gauge tubular steel frame.
- Padded seat with padded back.
- 250 lb weight rating.
- Finish: Tan-Tweed upholstery with Tan frame.

CART FOR STEEL CHAIRS

EVENT SERIES COLOR PROGRAM

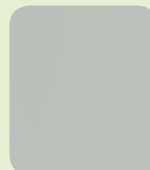


2700C

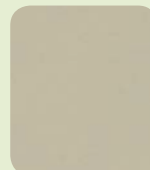
- Steel folding chair cart for 2710FC, 2800FC & 2900FC.
- Total capacity is 60 chairs.
- Finish: Black powder coat.



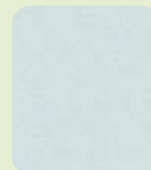
Black Plastic & Paint



Gray Plastic & Paint



Neutral Plastic & Paint



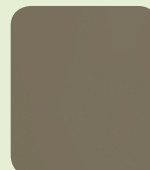
White Plastic & Paint



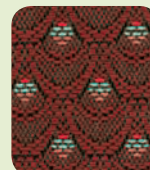
Gray Hammer-Coat Frame



Blue Plastic



Tan Paint



Maroon Fabric



Tan-Tweed Fabric

STACKING CHAIRS

Distinct looks for distinct environments, all designed for hours of comfort and years of durability.



2300SC
4/carton

- 16-gauge 5/8" round high-strength steel tubing.
- Lightweight design with extra-wide seat and waterfall edge.
- Black powder-coat frames.
- 250 lb weight rating.
- Finishes: Black, Blue.



6310SC
4/carton

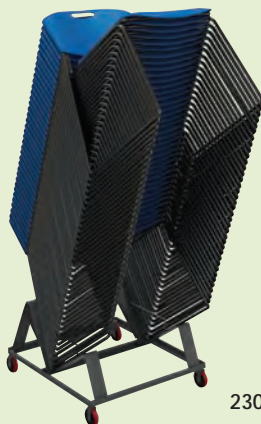
- One piece polypropylene seat shell.
- Frame cover prevents snags and adds strength.
- Black powder-coat frames.
- 250 lb weight rating.
- Finishes: Black, Blue.



6510SC
15/carton

- 18-gauge tubular steel frame.
- Gray hammered powder-coat finish.
- Durable polyester fabric.
- 250 lb weight rating.
- Finish: Scalloped Maroon upholstery with Gray hammer-coat frame.

CARTS FOR STACKING CHAIRS



2300C

- Stack cart for 2300SC chairs.
- Total capacity is 40 chairs.
- Finish: Black powder coat.



6310C

- Chair lift for 6310SC and 6510SC chairs.
- Total capacity is 12 chairs.
- Finish: Black powder coat.

FOLDING TABLES

These tables won't fold under pressure – they're specially reinforced to support more weight than standard folding tables. The seamless polypropylene tops are impact- and stain-resistant as well as easy-to-clean.



PROFILE
Indoor/outdoor tables feature seamless surfaces in textured white.



LOCK MECHANISM
Easy-to-use slide lock secures legs in set-up position.



STRUCTURE
Nearly twice the table-to-frame connections for added reinforcement.



SUPPORT
Heavy-duty 18-gauge tubular steel legs enhance stability and durability.

AVAILABLE SHAPES/SIZES (1/CARTON)





	MODEL#	TABLE SIZE	DIMENSION TABLE HEIGHT	SHIPPING WEIGHT (#'s)	TOP THICKNESS	MAX. WEIGHT WITH LOAD EVENLY DISTRIBUTED WITH 1/4" DEFLECTION
	770048	48" Round	29"H	32	1-3/4"	800 lbs.
	770060	60" Round	29"H	51	2"	900 lbs.
	770072	72" Round	29"H	72	2-1/4"	1,000 lbs.
	721872	18"D x 72"W Rectangular	29"H	30	1-1/4"	200 lbs.
	772448	24"D x 48"W Rectangular	29"H	22	1-3/4"	500 lbs.
	773060	30"D x 60"W Rectangular	29"H	32	1-3/4"	600 lbs.
	773072	30"D x 72"W Rectangular	29"H	35	1-3/4"	500 lbs.
	773096	30"D x 96"W Rectangular	29"H	49	2"	300 lbs.

TABLE CARTS

Moving tables in and out of multipurpose spaces is a breeze with these carts. They're convenient, compact storage units, too. Featuring wear-resistant, heavy-duty locking casters and a standard black powder-coat finish.



7724WC

- Stores 24" D Rectangular Tables
- Total capacity is:
20 each 24" x 48"
- Retractable handle provides flat cart storage.



77CRND

- Round Table Cart
- Total capacity by size:
16 each 48"
14 each 60"
13 each 72"
- 3-position adjustable handle.



7730WC

- Stores 30" D Rectangular Tables
- Total capacity by size:
20 each 30" x 60"
20 each 30" x 72"
18 each 30" x 96"
- Retractable handle provides flat cart storage.



619 N. COMMERCE ST. • SHEBOYGAN, WI • 53081
800-822-8037 • WWW.MAYLINE.COM